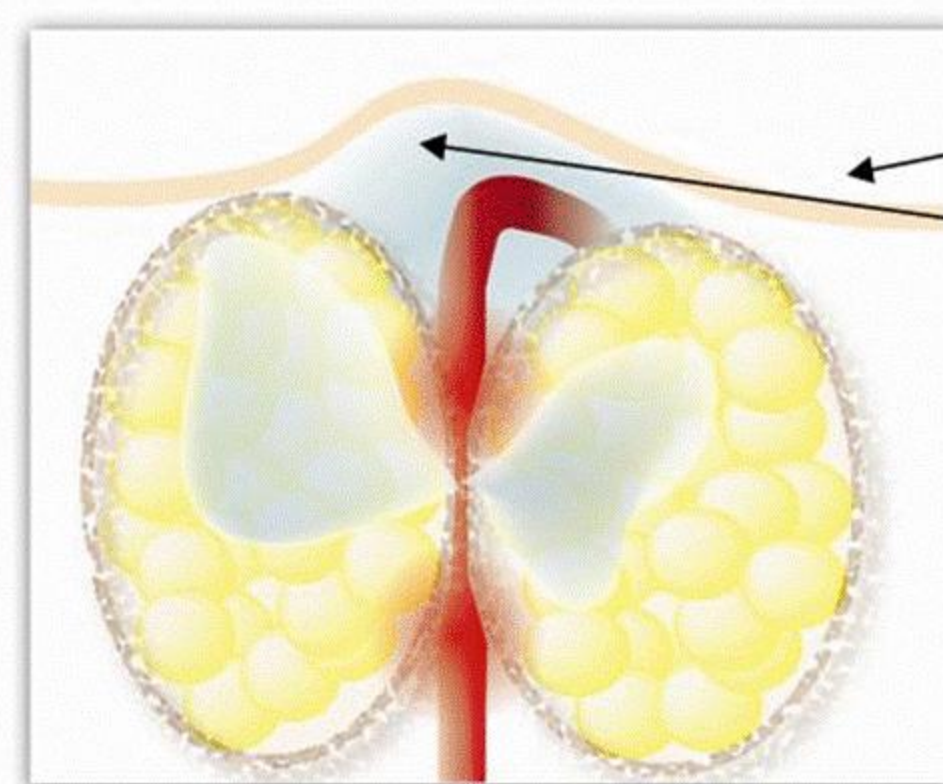
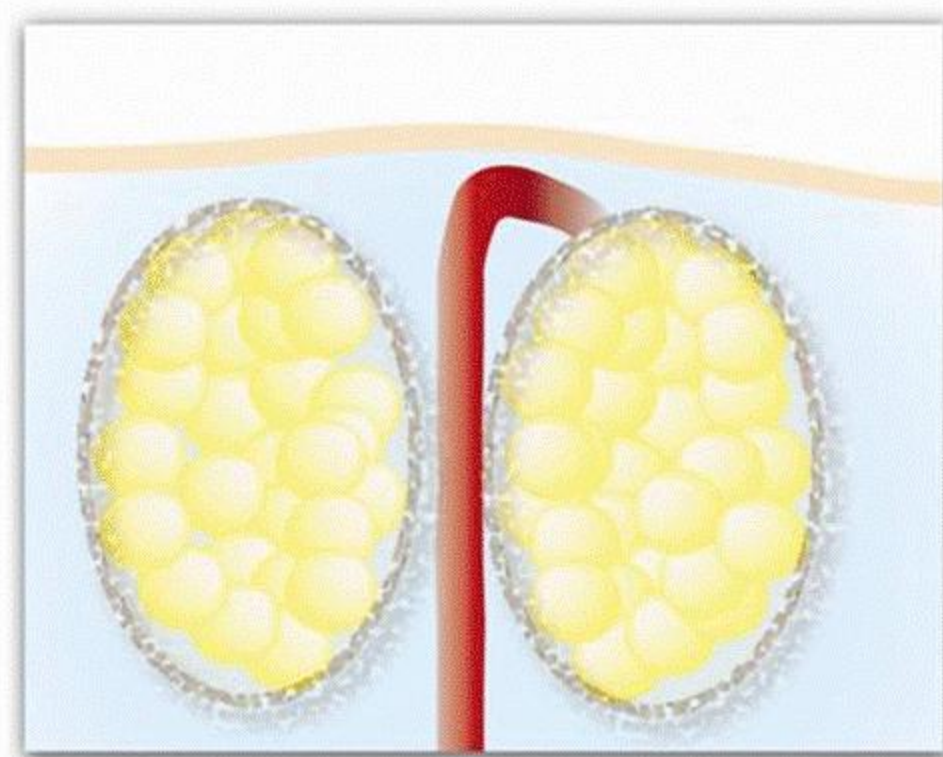


# Body Contour Lotion

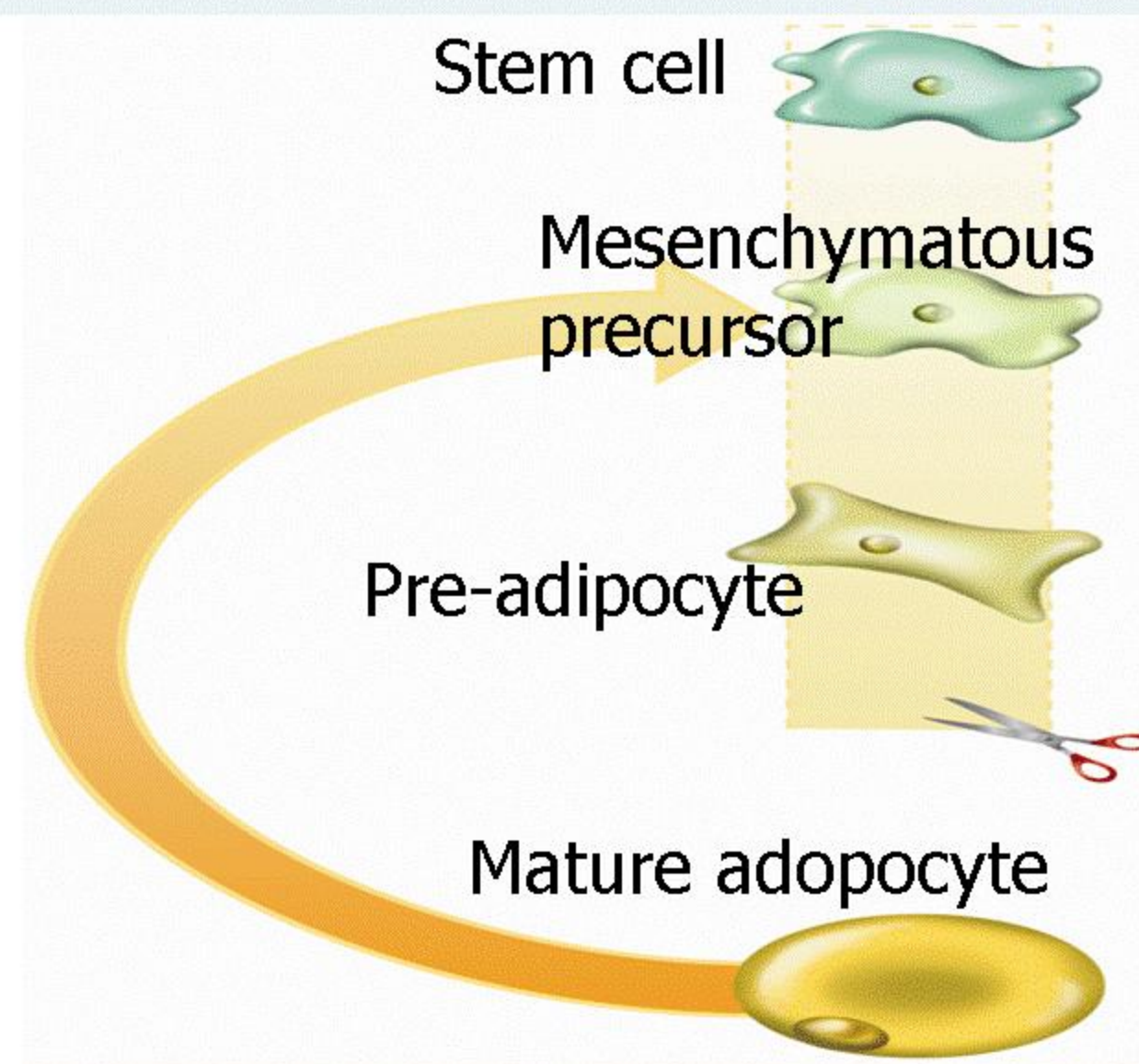
*Tired of all the lumps & bumps on your body?  
Want to get rid of your double chin?*



Fat deposit  
Captive water  
Compression of blood vessels, water leakage into the fat deposits



Decompression of blood vessels, free circulation and elimination of water



## Glaucine:

- interferes with adipocyte differentiation,
- activates lipid catabolism,
- initiates adipocyte reversion (diagram opposite),
- . stimulates mesenchymatous tissue at the expense of adipose tissue.



Photo 8: T0  
Culture with 2.5% BODYFIT™

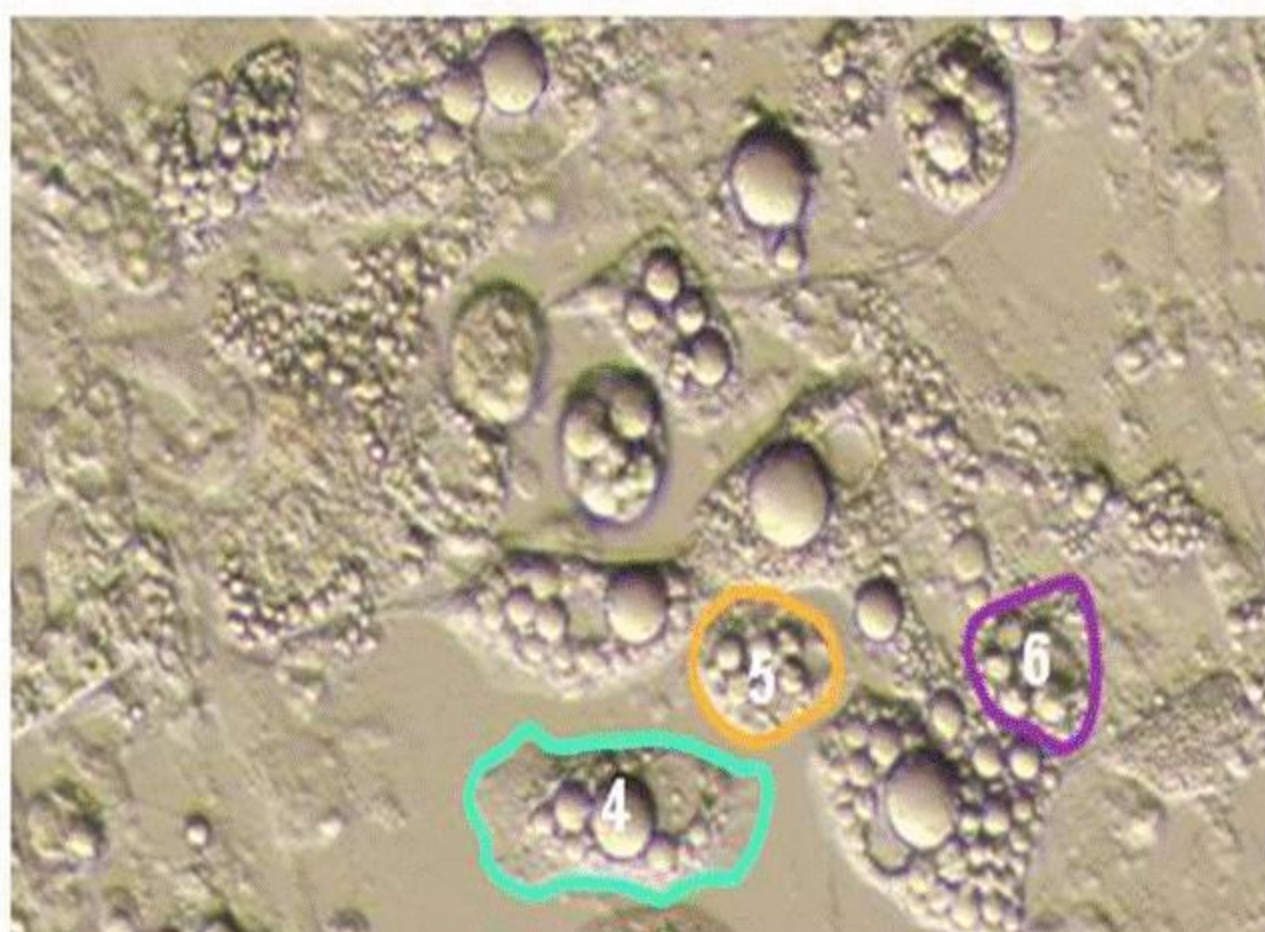


Photo 9: T48h  
Culture with 2.5% BODYFIT™

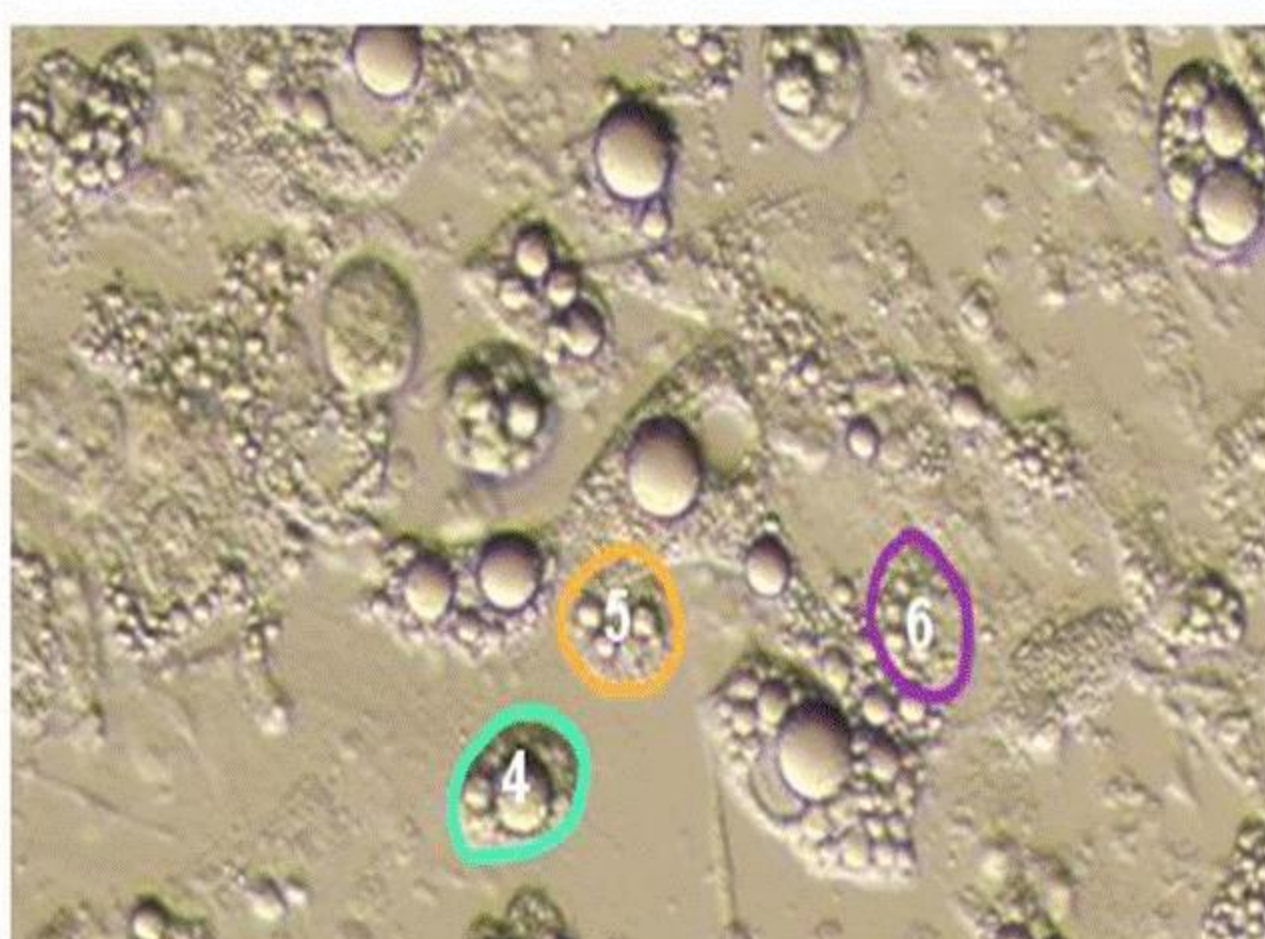


Photo 10: T72h  
Culture with 2.5% BODYFIT™

- 1. Glaucine is a multifunctional molecule that stimulates lipolysis (dissolve fat cells) and inhibits the appearance of new adipocytes (fat cells).**
- 2. It reduces the appearance of cellulite while contributing in drainage of water distribution through the tissue and thereby firmness is restored.**
- 3. It thus prevents and corrects cellulite formation.**

	Mean change in ROUGHNESS (n=17)					
	Thigh treated with 2.5% <b>Glaucine</b>			Untreated thigh		
	D0	D28	D56	D0	D28	D56
ROUGHNESS (x10 <sup>-4</sup> )	1058**	1047**	874**	1032	1061	1048
<b>Mean change %</b>	-	<b>-1.1</b>	<b>-17.4</b>	-	<b>+2.8</b>	<b>+1.5</b>
Significance vs. D0	-	NS	p <	-	NS	NS
<b>Maximum change %, in n = 3 subjects</b>	-	<b>-11%</b>	<b>-43%</b>			